

PUESTO DE  
TRABAJO SEGURO



Lenovo

Marca	<b>LENOVO</b>
P/N	<b>21L5002GSP</b>
Tamaño	<b>14"</b>
Procesador	<b>AMD Ryzen™ 5 PRO 7535U</b>
RAM	<b>16GB</b>
Almacenamiento	<b>512 GB</b>

Duración del servicio	<b>12 meses</b>
Sistema Operativo	<b>Window 11 PRO</b>

Funcionalidad y servicios según Kit Digital

✓ Requisitos de hardware	✓ Requisitos técnicos y de normativa
✓ Requisitos de publicidad	✓ Requisitos de soporte y atención
✓ Requisitos de ciberseguridad	✓ Antivirus

Precios

Importe total del dispositivo	1.100€ +IVA*
Importe subvencionado	1.000€
Importe a pagar por el beneficiario al firmar el acuerdo	100€ +IVA* + 210€ (el IVA* de los 1.000€)
Importe a pagar por el beneficiario una vez transcurran los 12 meses de prestación de servicio:	0€ (El dispositivo pasa a ser de tu propiedad)

¡DISPONEMOS DE MÁS MARCAS Y MODELOS!



## PERFORMANCE

### Processor

AMD Ryzen™ 5 PRO 7535U (6C / 12T, 2.9 / 4.55GHz, 3MB L2 / 16MB L3)

### Graphics

Integrated AMD Radeon™ 660M Graphics

### Chipset

AMD SoC Platform

### Memory

1x 16GB SO-DIMM DDR5-4800

### Memory Slots

Two DDR5 SO-DIMM slots, dual-channel capable

### Max Memory

Up to 64GB DDR5-4800

### Storage

512GB SSD M.2 2280 PCIe® 4.0x4 NVMe® Opal 2.0

### Storage Support<sup>[1]</sup>

One drive, up to 2TB M.2 2280 SSD

### Storage Slot

One M.2 2280 PCIe® 4.0 x4 slot

### Card Reader

None

### Optical

None

### Audio Chip

High Definition (HD) Audio, Realtek® ALC3287 codec

### Speakers

Stereo speakers, 2W x2, Dolby Audio™

### Camera

HD 720p with Privacy Shutter

### Microphone

2x, Array

### Battery

Integrated 57Wh

### Power Adapter

65W USB-C® (3-pin)

## DESIGN

### Display<sup>[2]</sup>

14" WUXGA (1920x1200) IPS 400nits Anti-glare, 45% NTSC, DBEF5

### Touchscreen

None

### Keyboard

Backlit, Spanish

### Case Color

Black

### Case Material

PC-ABS (Top), PC-ABS (Bottom)

### Dimensions (WxDxH)<sup>[3]</sup>

313.7 x 226 x 18.92 mm (12.35 x 8.90 x 0.74 inches)

### Weight<sup>[4]</sup>

Starting at 1.41 kg (3.11 lbs)

## SOFTWARE

### Operating System

Windows® 11 Pro, Spanish

### Bundled Software

None

## CONNECTIVITY

### Ethernet

100/1000M (RJ-45)

### WLAN + Bluetooth<sup>[5]</sup>

Qualcomm® Wi-Fi® 6E NFA725, 802.11ax 2x2 + BT5.3

### WWAN

None

### SIM Card

None

### NFC

None

### Standard Ports

- 1x USB-A (Hi-Speed USB / USB 2.0)
- 2x USB-A (USB 5Gbps / USB 3.2 Gen 1), one Always On
- 1x USB-C® (USB 10Gbps / USB 3.2 Gen 2), with USB PD 3.0 and DisplayPort™ 1.4
- 1x USB-C® (USB4® 40Gbps), with USB PD 3.0 and DisplayPort™ 1.4
- 1x HDMI® 2.1, up to 4K/60Hz
- 1x Headphone / microphone combo jack (3.5mm)
- 1x Ethernet (RJ-45)

### Optional Ports (configured)

1x Smart Card Reader

### Docking

Various docking solutions supported via USB-C®.

For more compatible docking solutions, please visit [Docking for ThinkPad® L14 Gen 5 \(AMD\)](#)

## SECURITY & PRIVACY

### Smart Card Reader

Smart Card Reader

### Security Chip

Discrete TPM 2.0 Enabled

### Fingerprint Reader

Touch Style, Match-on-Chip, Integrated in Power Button

### Physical Locks

Kensington® Nano Security Slot™, 2.5 x 6 mm

### Other Security

Camera privacy shutter

## MANAGEABILITY

### System Management

DASH

## SERVICE

### Base Warranty

1-year, Courier or Carry-in

### Included Upgrade

CO2 Offset 0.5 ton (2nd Gen) TP WHB (CPN)

## ACCESSORIES

### Bundled Accessories

None

## CERTIFICATIONS

### Green Certifications<sup>[6]</sup>

- ENERGY STAR® 8.0
- EPEAT™ Gold Registered
- ErP Lot 6
- ErP Lot 26
- RoHS compliant
- TCO Certified 9.0

### Mil-Spec Test

MIL-STD-810H military test passed

## MODEL

**TopSeller** : Yes **Announce Date** : 2024-06-05

**EAN / UPC / JAN** : 0198154444631 **End of Support** : 2030-11-16

Note:

<sup>[1]</sup> The storage capacity supported is based on the test results with current Lenovo storage offerings.

<sup>[2]</sup> IPS (in-plane switching) technology may refer to IPS, PLS, ADS, AHVA, AAS.

<sup>[3]</sup> The system dimensions may vary depending on configurations.

<sup>[4]</sup> The system weight is approximate and based on results in.....

· Lenovo reserves the right to change specifications without notice.

To see more note information, please link to <https://psref.lenovo.com/Detail/2462?M=21L50021SP>

## Premier Support - A direct 24x7x365 line to our most elite technicians.



Advanced technical support, 24x7x365, in more than 100 markets



Technical Account Managers for proactive relationship and escalation management



Comprehensive hardware & OEM software support



Priority on service delivery and repair parts



Single point of contact for simplified end-to-end case management



Lenovo Service Connect Portal for customized reporting and product support

## Accidental Damage Protection - Protection of your PC from the unexpected.

Experience shows that a significant portion of devices may be damaged (and not covered under warranty) in the first three years. Lenovo's Accidental Damage Protection service covers accidents beyond the system warranty such as drops, spills, bumps and even electrical surges. Make sure your new device has maximum protection, avoid unplanned costs and get peace of mind.

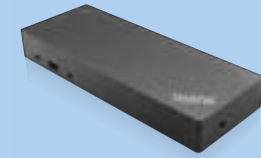
## Base Warranty - Included with the systems you purchase, default 1- or 3-year coverage window.

## Warranty Extensions & Upgrades - Service and protection that's right for your circumstances.

- Pick Up & Return Courier
- Onsite Support
- Technician Installed Customer
- Replaceable Unit Service
- International Warranty Upgrade

Lenovo may not offer the products, services or features discussed in this document in all regions. Lenovo may withdraw an offering at any time. Information is subject to change without notice. Consult your local representative for information on offerings available in your area. Lenovo reserves the right to change specifications or other product information without notice. Lenovo is not responsible for photographic or typographical errors. Lenovo provides this publication "as is" without warranty of any kind, either express or implied, including the implied warranties of merchantability or fitness for a particular purpose.

## Recommended Accessories



### ThinkPad Hybrid USB-C with USB-A Dock (American Standard Plug Type B)

40AF0135US

- The ThinkPad Hybrid USB-C with USB-A dock is a productivity solution for any USB-C or USB-A laptop, including non-Lenovo laptops from Dell, HP, and Apple, providing power, display, and port expansion in any m...

## Recommended Services

BEST	3Y Lenovo Protect (Premier Support + Keep Your Drive + Accidental Damage Protection + Sealed Battery + International Upg) (5PS0N73206)
BETTER	3Y Lenovo Support (Premier Support + Keep Your Drive + Sealed Battery + International Upg) (5PS0N73181)
GOOD	3Y Premier Support Upgrade from 1Y Courier/Carry-in (5WS0T36154)

For a full list of accessories and services, please visit:  
<https://smartfind.Lenovo.com>



**PSREF**  
Product Specifications  
Reference