

PUESTO DE
TRABAJO SEGURO



Lenovo

Marca	LENOVO
P/N	21MW0042SP
Tamaño	16"
Procesador	AMD Ryzen™ 5 7535HS
RAM	16GB
Almacenamiento	512 GB

Duración del servicio	12 meses
Sistema Operativo	Window 11 PRO

Funcionalidad y servicios según Kit Digital

✓ Requisitos de hardware	✓ Requisitos técnicos y de normativa
✓ Requisitos de publicidad	✓ Requisitos de soporte y atención
✓ Requisitos de ciberseguridad	✓ Antivirus

Precios

Importe total del dispositivo	1.100€ +IVA*
Importe subvencionado	1.000€
Importe a pagar por el beneficiario al firmar el acuerdo	100€ +IVA* + 210€ (el IVA* de los 1.000€)
Importe a pagar por el beneficiario una vez transcurran los 12 meses de prestación de servicio:	0€ (El dispositivo pasa a ser de tu propiedad)

¡DISPONEMOS DE MÁS MARCAS Y MODELOS!



PERFORMANCE

Processor

AMD Ryzen™ 5 7535HS (6C / 12T, 3.3 / 4.55GHz, 3MB L2 / 16MB L3)

Graphics

Integrated AMD Radeon™ 660M Graphics

Chipset

AMD SoC Platform

Memory

1x 16GB SO-DIMM DDR5-4800

Memory Slots

Two DDR5 SO-DIMM slots, dual-channel capable

Max Memory^[1]

Up to 64GB DDR5-4800

Storage

512GB SSD M.2 2242 PCIe® 4.0x4 NVMe®

Storage Support

Up to two drives, 2x M.2 SSD

- M.2 2280 SSD up to 2TB

Storage Slot

Two M.2 2280 PCIe® 4.0 x4 slots

Card Reader

SD Card Reader

Optical

None

Audio Chip

High Definition (HD) Audio, Realtek® ALC3287 codec

Speakers

Stereo speakers, 2W x2, Dolby Audio™

Camera

HD 720p with Privacy Shutter

Microphone

2x, Array

Battery

Integrated 45Wh

Power Adapter

65W USB-C® (3-pin)

Special Features

Modern Standby

DESIGN

Display^[2]

16" WUXGA (1920x1200) IPS 300nits Anti-glare, 45% NTSC

Touchscreen

None

Keyboard

Backlit, Spanish

Touchpad

Buttonless Mylar® surface multi-touch touchpad, supports Precision TouchPad (PTP), 75 x 120 mm (2.95 x 4.72 inches)

Case Color

Arctic Grey

Surface Treatment

Anodizing Sandblasting

Case Material

Aluminium (Top), PC-ABS (Bottom)

Dimensions (WxDxH)^[3]

356 x 253.5 x 17.5 mm (14.01 x 9.98 x 0.69 inches)

Weight^[4]

Starting at 1.7 kg (3.75 lbs)

SOFTWARE

Operating System

Windows® 11 Pro, Spanish

Bundled Software

Office Trial

CONNECTIVITY

Ethernet

100/1000M (RJ-45)

WLAN + Bluetooth^[5]

Wi-Fi® 6, 802.11ax 2x2 + BT5.3

Standard Ports

- 1x USB-A (USB 5Gbps / USB 3.2 Gen 1)
- 1x USB-A (USB 5Gbps / USB 3.2 Gen 1), Always On
- 1x USB-C® (USB 10Gbps / USB 3.2 Gen 2), with USB PD 3.0 and DisplayPort™ 1.4
- 1x USB-C® (USB4® 40Gbps), with USB PD 3.0 and DisplayPort™ 1.4
- 1x HDMI® 2.1, up to 4K/60Hz
- 1x Headphone / microphone combo jack (3.5mm)
- 1x Ethernet (RJ-45)
- 1x SD card reader

Docking

Various docking solutions supported via USB-C®.

For more compatible docking solutions, please visit [Docking for ThinkBook 16 G7 ARP](#)

SECURITY & PRIVACY

Security Chip

Firmware TPM 2.0 Enabled

Fingerprint Reader

Touch Style, Match-on-Chip, Integrated in Power Button

Physical Locks

Kensington® Nano Security Slot™, 2.5 x 6 mm

Other Security

Camera privacy shutter

SERVICE

Base Warranty

1-year, Courier or Carry-in

Included Upgrade

1Y Accidental Damage Protection Add On (CPN), 1Y Onsite from 1Y Courier/Carry-in(CPN)

ACCESSORIES

Bundled Accessories

None

CERTIFICATIONS

Green Certifications^[6]

- ENERGY STAR® 8.0
- EPEAT™ Gold Registered
- ErP Lot 6
- ErP Lot 26
- RoHS compliant
- TCO Certified 9.0

Other Certifications

TÜV Rheinland® Low Blue Light (Software Solution)

Mil-Spec Test

MIL-STD-810H military test passed

MODEL

TopSeller : Yes **Announce Date** : 2024-07-03

EAN / UPC / JAN : 198154723897 **End of Support** : 2030-10-28

Note:

^[1] Maximum memory is only to test technical readiness of notebook. Available memory to sell would vary.

^[2] IPS (in-plane switching) technology may refer to IPS, PLS, ADS, AHVA, AAS.

^[3] The system dimensions may vary depending on configurations.

^[4] The system weight is approximate and based on results in Lenovo lab, which varies depending on the source of component, variance of the distribution of each component, and manufacturing process. It may not be the exact weight for each specific model.

^[5] Wi-Fi 6 full features might be limited by country-level restrictions.

^[6] EPEAT is registered where applicable, please visit

• Lenovo reserves the right to change specifications without notice.

To see more note information, please link to <https://psref.lenovo.com/Detail/2451?M=21MW0042SP>

Premier Support - A direct 24x7x365 line to our most elite technicians.



Advanced technical support, 24x7x365, in more than 100 markets



Technical Account Managers for proactive relationship and escalation management



Comprehensive hardware & OEM software support



Priority on service delivery and repair parts



Single point of contact for simplified end-to-end case management



Lenovo Service Connect Portal for customized reporting and product support

Accidental Damage Protection - Protection of your PC from the unexpected.

Experience shows that a significant portion of devices may be damaged (and not covered under warranty) in the first three years. Lenovo's Accidental Damage Protection service covers accidents beyond the system warranty such as drops, spills, bumps and even electrical surges. Make sure your new device has maximum protection, avoid unplanned costs and get peace of mind.

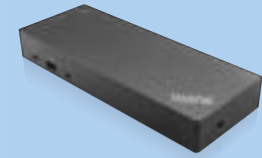
Base Warranty - Included with the systems you purchase, default 1- or 3-year coverage window.

Warranty Extensions & Upgrades - Service and protection that's right for your circumstances.

- Pick Up & Return Courier
- Onsite Support
- Technician Installed Customer
- Replaceable Unit Service
- International Warranty Upgrade

Lenovo may not offer the products, services or features discussed in this document in all regions. Lenovo may withdraw an offering at any time. Information is subject to change without notice. Consult your local representative for information on offerings available in your area. Lenovo reserves the right to change specifications or other product information without notice. Lenovo is not responsible for photographic or typographical errors. Lenovo provides this publication "as is" without warranty of any kind, either express or implied, including the implied warranties of merchantability or fitness for a particular purpose.

Recommended Accessories



ThinkPad Hybrid USB-C with USB-A Dock (American Standard Plug Type B)

40AF0135US

- The ThinkPad Hybrid USB-C with USB-A dock is a productivity solution for any USB-C or USB-A laptop, including non-Lenovo laptops from Dell, HP, and Apple, providing power, display, and port expansion in any m...

Recommended Services

BEST	5Y Premier Support Upgrade from 1Y Onsite (5WS0T36174)
BETTER	4Y Premier Support Upgrade from 1Y Onsite (5WS0T36131)
GOOD	3Y Premier Support Upgrade from 1Y Onsite (5WS0T36120)

For a full list of accessories and services, please visit: <https://smartfind.Lenovo.com>



PSREF
Product Specifications
Reference